

Genius[®] ZigZag1

SINGLE PANEL SCREEN

Retractable Screen Systems

OWNER'S GUIDE AND INSTALLATION INSTRUCTIONS

ZigZag1 RETRACTABLE DOOR SCREEN

Thank you for choosing the Genius ZigZag1 Retractable Door Screen. These instructions describe installation on a large opening patio door. However, the screen can also be installed on various other types of doors, windows, and other openings. For help installing, please contact us or visit www.geniusscreens.com.

Please read the complete installation instructions before proceeding.

INSTALLATION TOOLS

| | |
|---|---------------------------|
| Power Screw Driver | Square |
| Long Phillips Bit | Pencil |
| 2mm Allen Wrench (Provided) | Scissors |
| Tape Measure | Flashlight (Recommended) |
| Flat Head Screw driver | Step Ladder (Recommended) |
| Appropriate Personal Protective Equipment | |

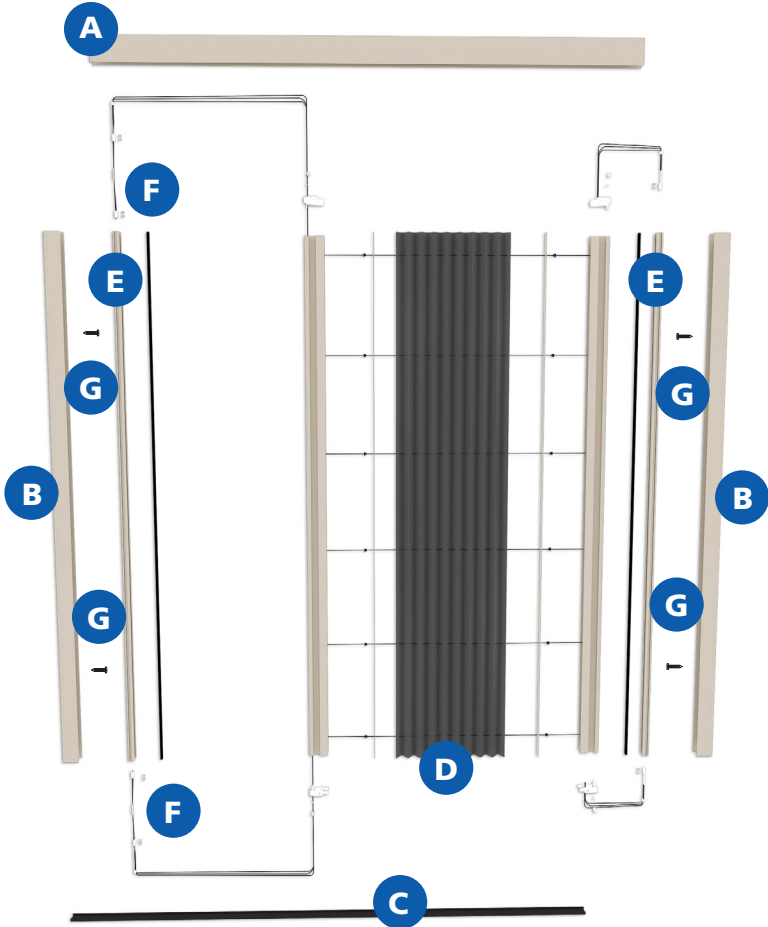


Installation Questions?
Replacement Parts?

WE CAN ASSIST YOU.
1-866-523-9511

DOOR SCREEN COMPONENTS

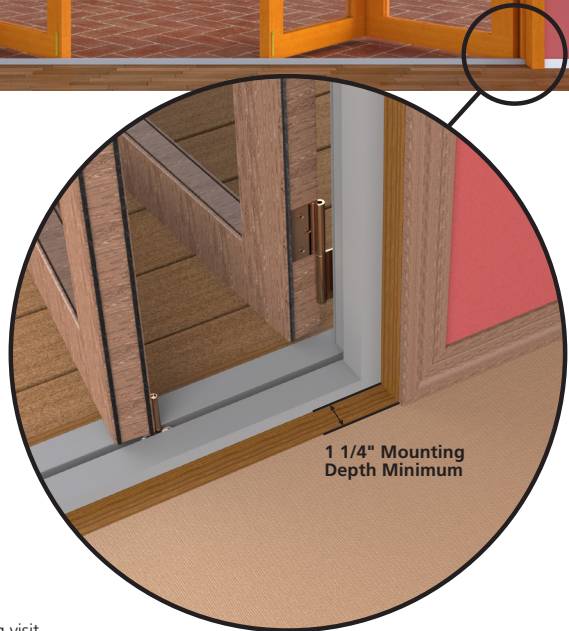
- | | | | |
|----------------------------|---------|-----------------------------------|----------|
| A Top Guide | (Qty 1) | E Magnet Profile | (Qty 2) |
| B Side Guide | (Qty 2) | F Cord Lock Tensioner | (Qty 2) |
| C Bottom Guide | (Qty 1) | G #8 x 3/4" Phillips Screw | (Qty 11) |
| D Cassette Assembly | (Qty 1) | | |



BEFORE YOU START

Before beginning ensure the opening is plumb, level, square and the bottom sill has a flat, stable, and smooth mounting surface. The screen must be inset (recess) mounted at a depth of at least 1-1/4". If you do not have enough of a mounting surface, then you will need to create one using decorative trim or brick molding.*

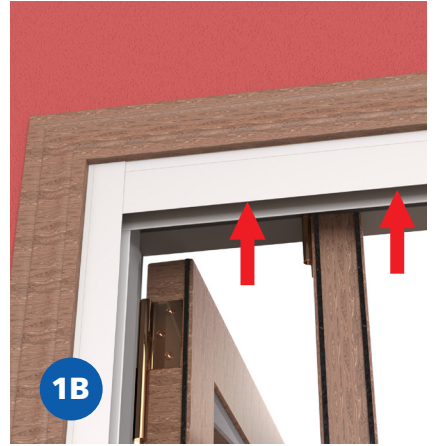
The screen can be installed on either the exterior or the interior of the opening.



*For tips on how to prepare your opening visit <https://www.geniusscreens.com/products/door-screens/zigzag-screen>

1 INSTALL GUIDES

Begin by locating the Side Guides. Install one on each side of the opening and push to the top. Secure using #8 x 3/4" Phillips Screws in the pre-drilled holes on each side (1A). Next, install the Top Guide by tucking each end into the Side Guides and centering it in the opening. Secure with # 8 x 3/4" Philips Screws in the pre-drilled holes (1B).



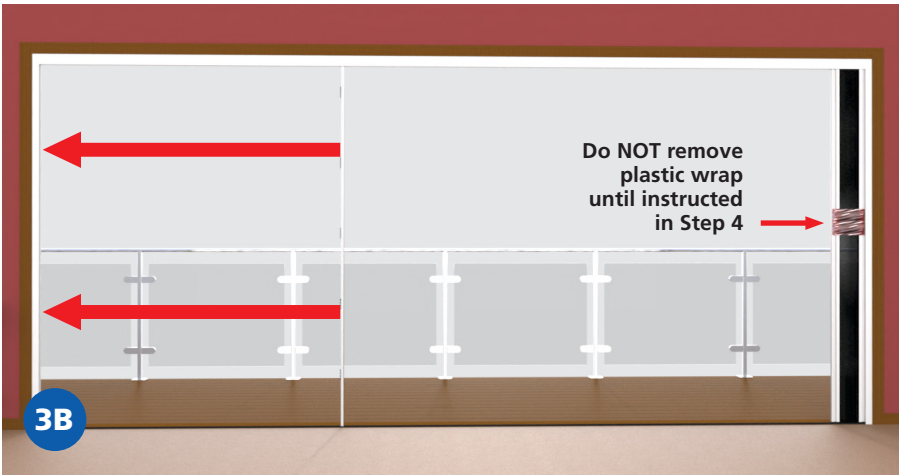
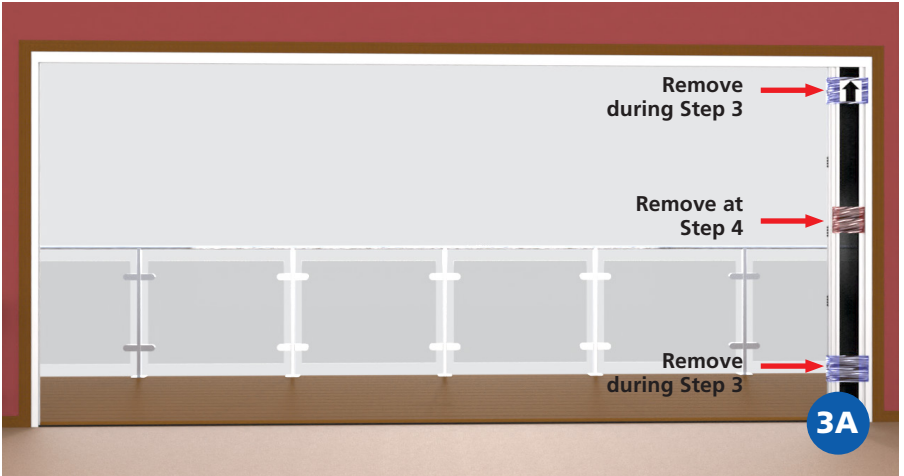
2 INSTALL BOTTOM GUIDE

Clean the bottom mounting surface and ensure it is solid, flat, and level. If needed, create a flat, smooth, and level surface. Locate the Bottom Guide and position it so it is centered in the opening and tucked into the Side Guides. The white paper backing should be facing down. (NOTE: The adhesive is very sticky. Use care when positioning). Remove the paper backing from the Bottom Guide and adhere it to the bottom sill.



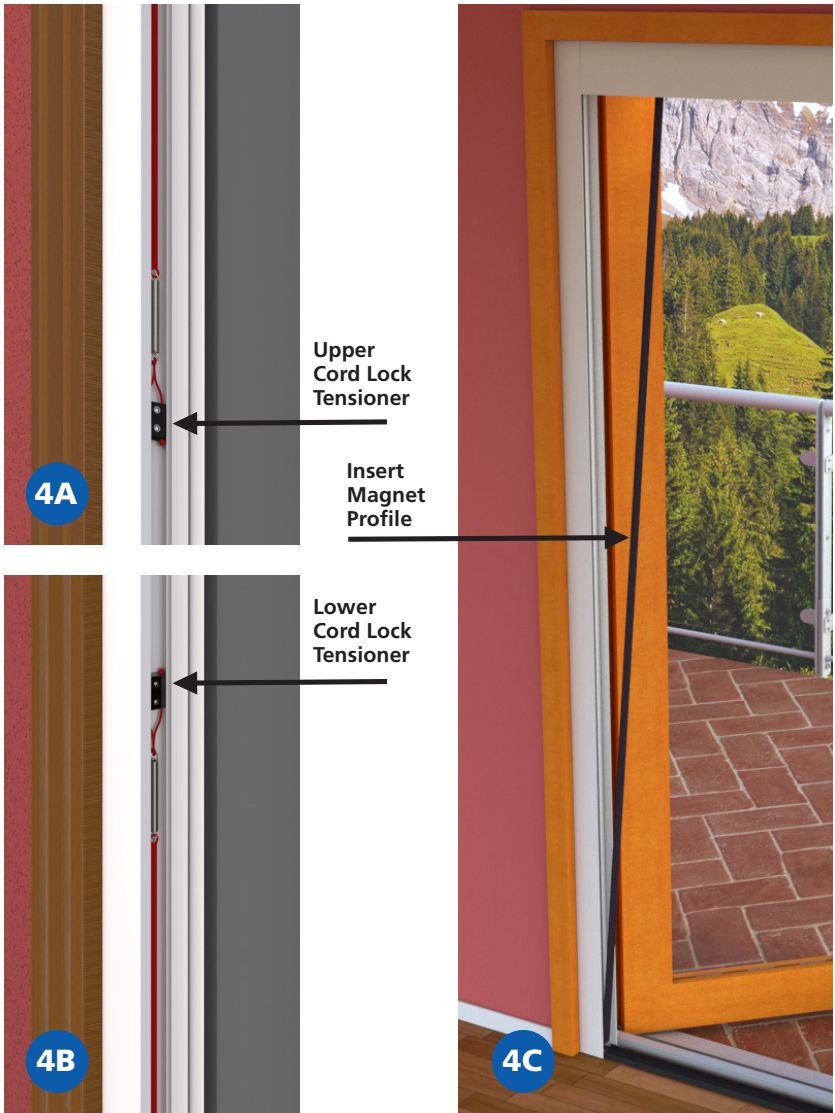
3 INSTALL CASSETTE ASSEMBLY

During Step 3, **DO NOT open the Screen Cassette Assembly and expose the screen fabric.** Now, remove **ONLY** the top and bottom outer plastic wrapping from the Screen Cassette Assembly. Position the Screen Cassette Assembly in the Top Guide and on the Bottom Guide with the sticker towards the top and the inside. Push the Screen Cassette Assembly all the way to the right of the opening **as viewed from the inside.** Snap it into the Side Guide (3A). Next, remove the tape from the cords and grasp the left Magnet Profile and carefully pull it to the left side of the opening. Ensure none of the cords are tangled, twisted, or pass over each other, then snap it into the left Side Guide (3B).



4 ADJUST TENSION AND TEST OPERATION

Remove the magnet strip to expose the Cord Lock Tensioners. Ensuring the screen is fully collapsed, adjust the tension by sliding the top and bottom Cord Lock Tensioners in even increments until there is slight tension and no slack in the cords (4A & 4B). Secure the Cord Lock Tensioner using the 2mm Allen wrench provided. Remove the remaining plastic wrapping and test the operation of the screen. Separate the pleats with your fingers as needed. If necessary, fully collapse the screen and readjust the tension. Push the magnet strip back in the groove of the Magnet Profile (4C). Refer to the troubleshooting guide if the operation continues to be unsatisfactory.



TROUBLESHOOTING GUIDE

PROBLEM:

One of the cords is longer or shorter than the others.

The cords sag into the opening when operating the Screen.

The screen doesn't close all the way.

It is difficult to slide the Cord Lock Tensioners

SOLUTION:

- A. Ensure there are no snags, tangles, or pinched cords.
- B. Remove the Magnet to reveal the Cord Hold and Cord Lock Tensioner
- C. Loosen the hex screws in the Cord Lock Tensioner(s). To adjust the top cords, adjust the top Tensioner and to adjust the bottom cords, adjust the bottom Tensioner.
- D. Untie the knot and gently pull the cable(s) that have any slack until the slack is gone.
- E. Retie the knot and re-tension the cords using the Cord Lock Tensioners. Then snap the Magnet Profile back into position and test the operation.

Try increasing the tension on the corresponding cord tensioner and verify one or more of the cords is not longer than the others. If so, see "one of the cords is longer or shorter than the others."

Verify there are no snags in the cords, particularly at the top and bottom of the Cassette Assembly, and be sure there are no pinched cords in and around the notch and track of the Top Guide. You may have to loosen the Cord Lock Tensioners to adjust the cords.

Lubricate the track inside the Side Guides with a silicone spray.

**FOR INSTALLATION OR WARRANTY ASSISTANCE PLEASE CALL:
1-866-523-9511 OR VISIT WWW.GENIUSSCREENS.COM**

The following information is necessary to process your warranty:

1. Registration Number
2. Proof of Purchase

Genius Retractable Screens provide insect protection and support fresh, natural ventilation in low-wind conditions. Unlike 4-sided rigid framed screens, Genius Retractable Screens move in and out of a protective cassette and the exposed surface area and edges of the fabric are flexible. Consequently, the wind speed that a retractable screen can withstand (e.g. before the edges of the screen fabric may push out of the guide rails), will depend on the width and height of the opening, the openness factor of the specific screen fabric and, other design factors of the model. Retractable screens are not to be kept open or continually exposed to wind, sun, rain or other harsh conditions. Please be sure to use your retractable screen only during low-wind conditions.

Genius[®]
Retractable Screen Systems